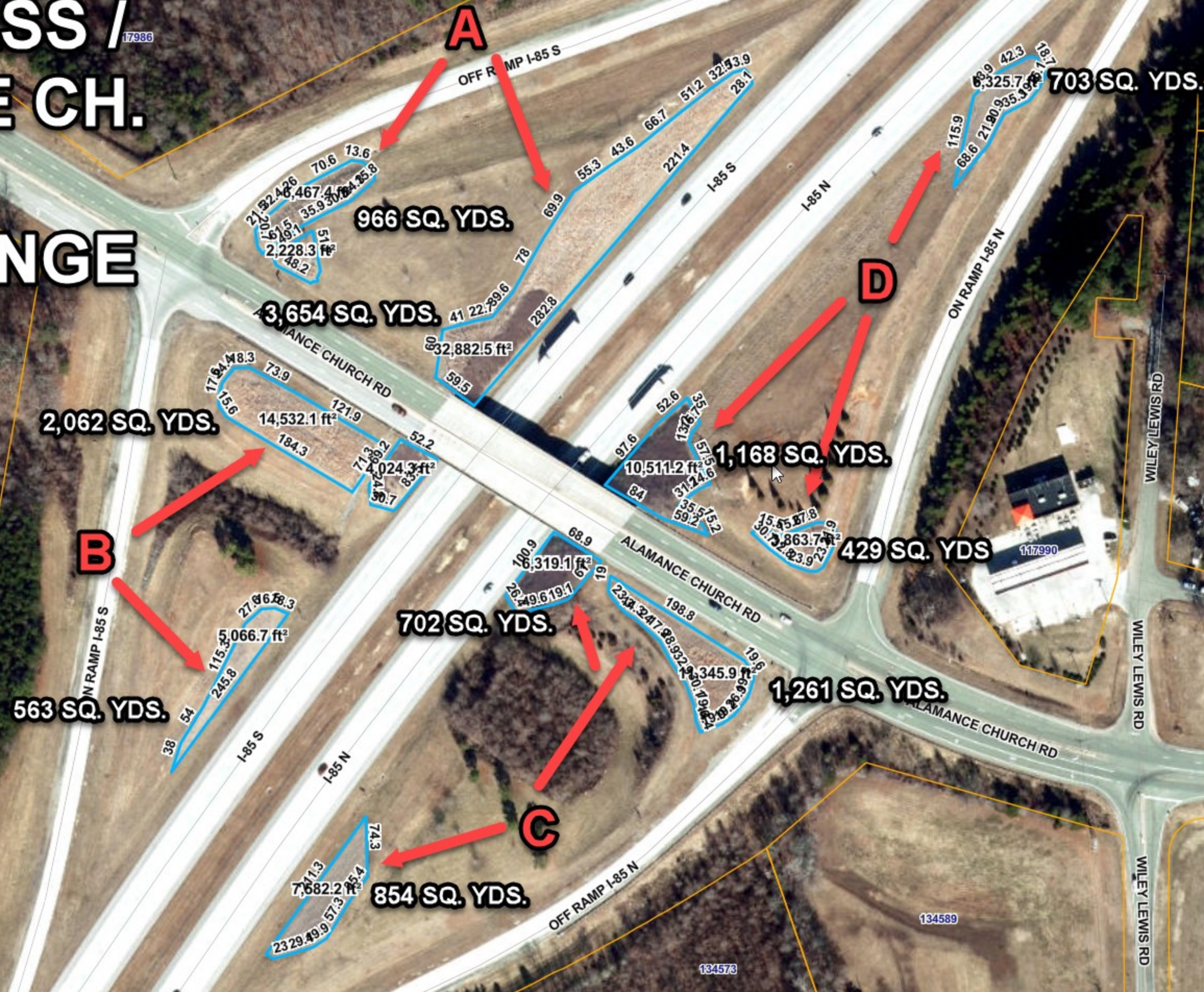


**This electronic collection of documents is provided
for the convenience of the user
and is Not a Certified Document –**

**The documents contained herein were originally issued
and sealed by the individuals whose names and license
numbers appear on each page, on the dates appearing
with their signature on that page.**

**This file or an individual page
shall not be considered a certified document.**

I-85 BY-PASS / ALAMANCE CH. RD. RD. INTERCHANGE



I-85 BY-PASS / HWY 220 INTERCHANGE

TREES

TREES = 70 SQ. FT PER

274 SQ. YDS.

B

52.3
49.2
45.2
55.3
466.8

A

60.4
73.1
73.9
56.7
4,209.2

468 SQ. YDS

355 SQ. YDS.

C

36.8
69.3
54.8
25.7
40
3,193.2

D

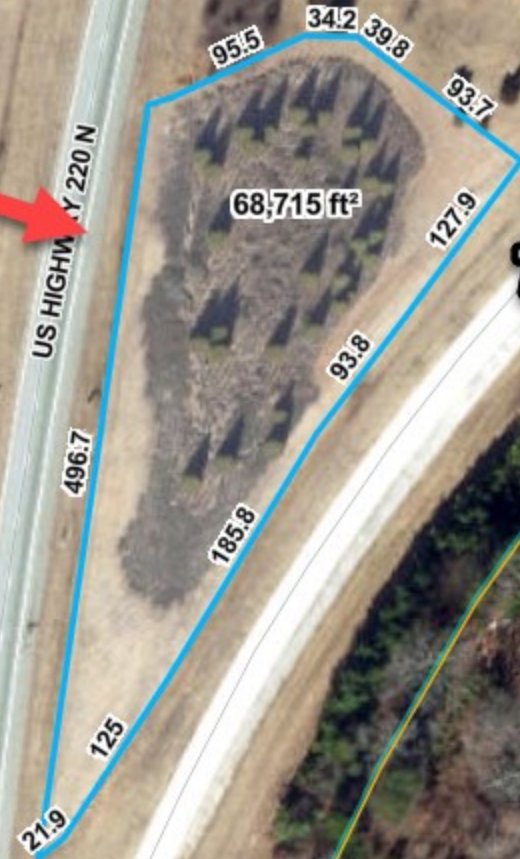
63.3
70.1
71.4
69.2
4,656.4

517 SQ. YDS.



I-85 BY-PASS / HWY 220

A

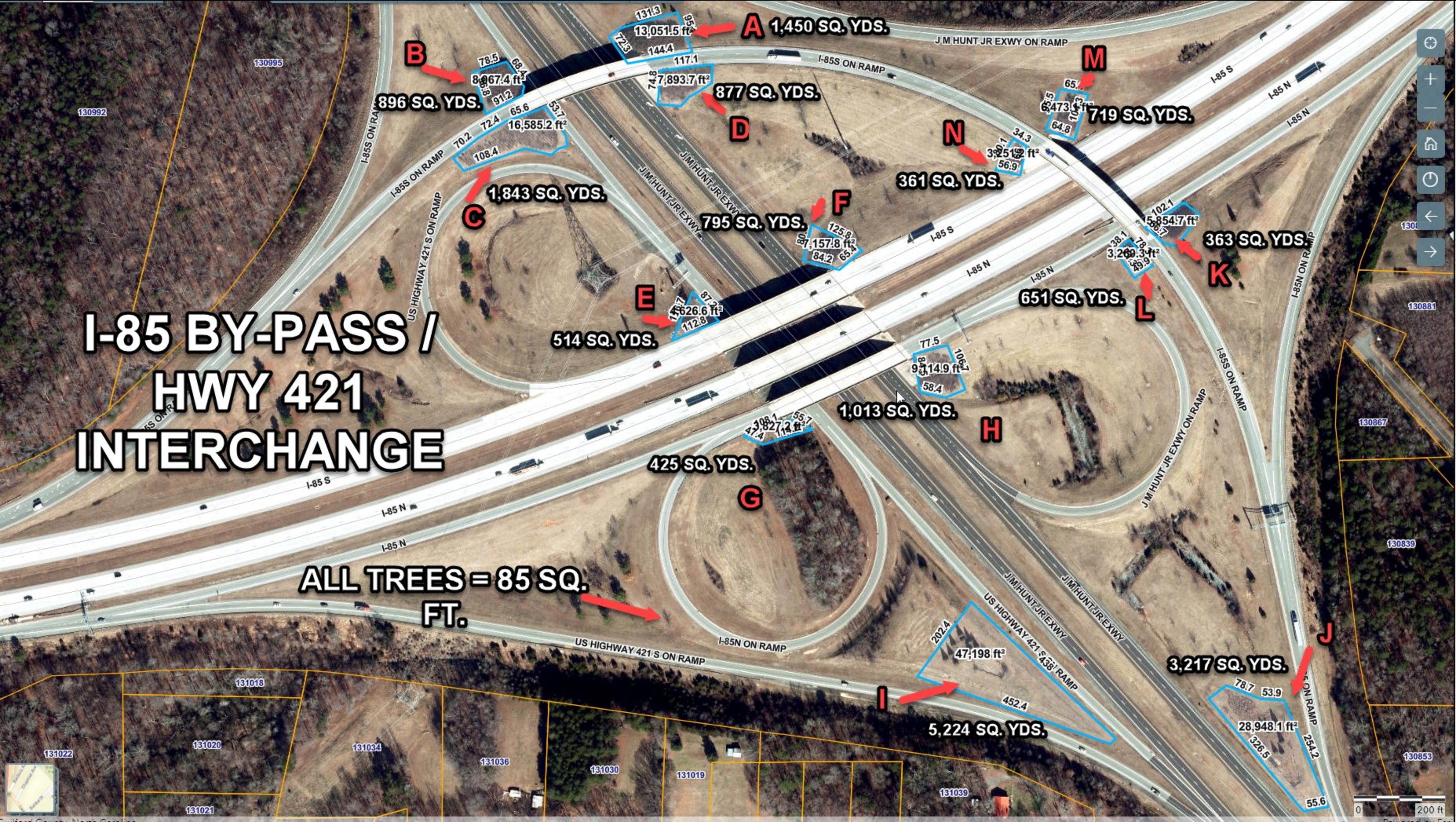


TREES TO MAINTAIN

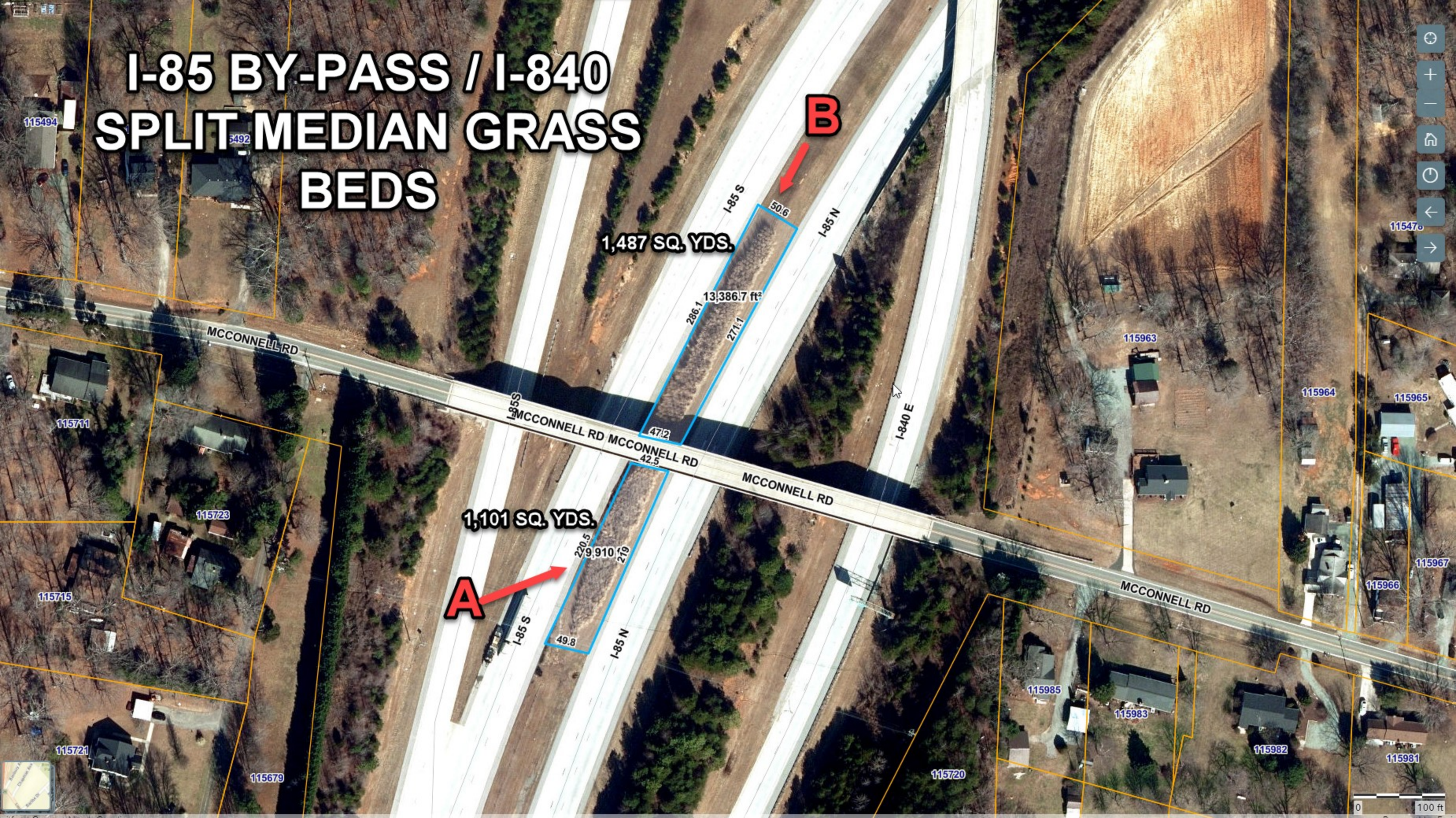


I-85 BY-PASS / HWY 421 INTERCHANGE

ALL TREES = 85 SQ. FT.



I-85 BY-PASS / I-840 SPLIT MEDIAN GRASS BEDS



1,487 SQ. YDS.

B

1,101 SQ. YDS.

A

I-85 S

I-85 N

I-840 E

MCCONNELL RD

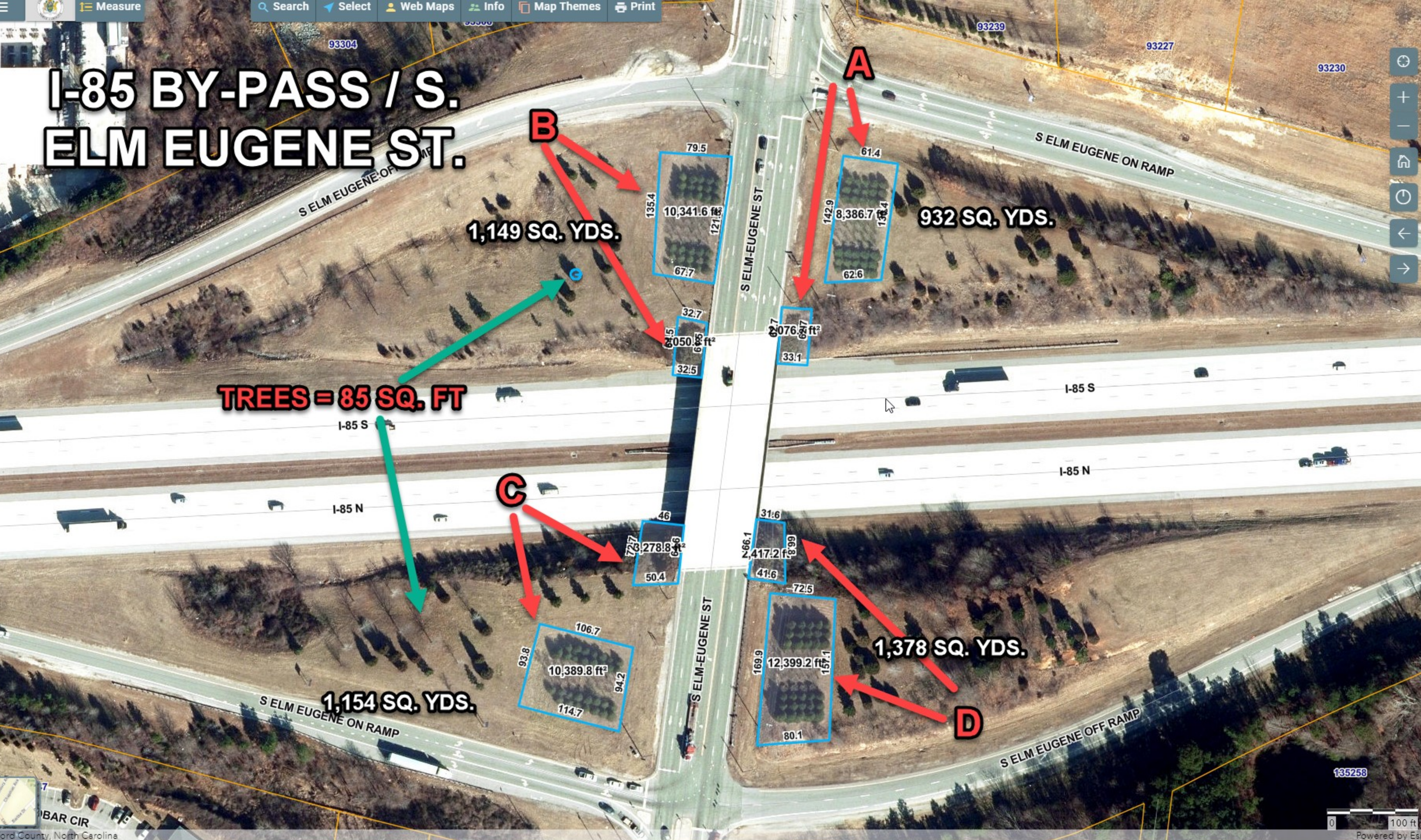
MCCONNELL RD

MCCONNELL RD

MCCONNELL RD

0 100 ft

I-85 BY-PASS / S. ELM EUGENE ST.



I-85 BY-PASS / YOUNGS MILL INTERCHANGE

